

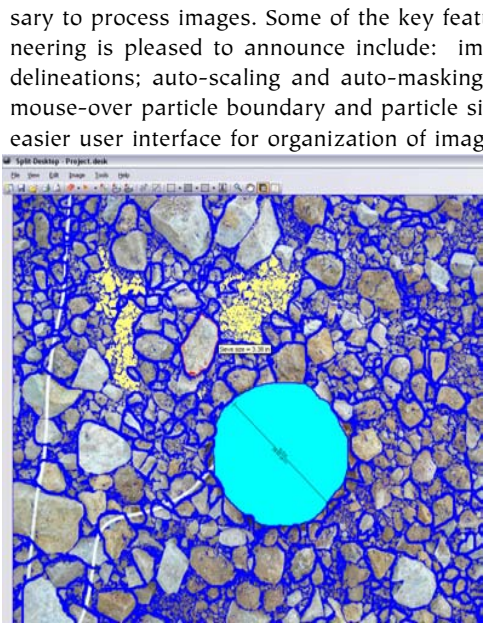
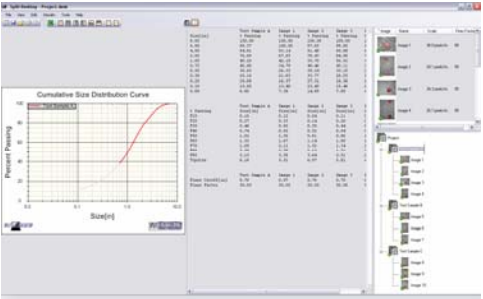
More Than Just Size...

Volume 1
Issue 13
March 2010

Split-Desktop Version 3.0 Available Now!

Analyzing images and generating size distribution curves is now easier than ever!

Split-Desktop Version 3.0 will offer the industry many time saving features that will dramatically reduce the amount of time necessary to process images.



Some of the key features Split Engineering is pleased to announce include: improved particle delineations; auto-scaling and auto-masking of scale balls; mouse-over particle boundary and particle size information; easier user interface for organization of images and generation of curves; quick export of results into Excel report. Special upgrade pricing to be announced soon for current clients. All 2009 purchasers of 2.0 will receive a free upgrade to 3.0.

Inside this issue:

Trade Shows	2
Welcome New Clients	2
International Call Support	2
Current Projects	3
News	4
Split Engr. Directory	4

Interested in upgrading an existing system installation or want to purchase a new Split-Online Version 4.0 system, please contact Tom BoBo (tbobo@spliteng.com) or Cristian Rodriguez (sales@spliteng.com) in our Latin America office for more details.

Trade Shows

2010 SME Annual Meeting and Conference — Phoenix, AZ — February 28 - March 3, 2010 — Booth #1032.

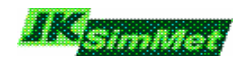
Expomin 2010 — Santiago, Chile — April 12-16, 2010



Welcome New Clients

SPLIT ONLINE
ASARCO Mission
Codelco Chuquicamata

SPLIT-FX
AngloGold Cripple Creek & Victor
State of Alaska
University of Exeter



Universidad de La Serena

SPLIT DESKTOP
KGHM CUPRUM
Minera San Cristóbal
Mogalakwena Platinum
Northparkes Mines

Thunderbird Mining Systems
Drill Information Systems
Minera Barrick Lagunas Norte



Britanite
Cia. Minera Teck Carmen - Andacollo
Davey Bickford

SPLIT-NET
BHP Leinster Nickel
Carlota Copper Company



Universidad de La Serena

Client International Call Support Center

USA: + 1-520-327-3773
Mexico: + 52-55-50183774
Peru: + 51-1-7058125
Chile: + 56-2-5978219

Current Projects Update

The Worldwide Gold Rush...Split Engineering and Split-Online are there!

In the last six months Split Engineering has traveled the world, installing and commissioning Split-Online systems to help our customers quantify their fragmentation size. With gold prices skyrocketing and topping \$1217USD in 2010, with an average around \$1100oz over the past six months, Split Engineering has been racking up the frequent flier miles providing real-time particle size information to enhance our customer's process control. Some of our customers producing gold we have helped in the past six months are:

- **Newmont Boddington in Western Australia** - we completed the installation with four camera monitoring stations processing their Secondary Crusher Feed and Product, as well as their Screen Oversize Product and HPGR Feed.
- **Gold Fields Abooso – Damang Mine in Ghana, West Africa** – we installed a four camera system to monitor their Primary Crusher Product, SAG Mill Feed, Pebble Crusher Feed and Product.
- **AngloGold Ashanti - Navachab in Namibia** – commissioned a one camera system to monitor their SAG mill feed.
- **Goldcorp Inc. - Peñasquito located in Zacatecas, Mexico** – installed one system with three cameras monitoring their Primary Crusher Product and two SAG Mill Feed conveyors.
- **Randgold Resources and AngloGold Ashanti joint venture – Morila in Mali West Africa** – initially installed in 2003 the system was recently upgraded to the latest Split-Online software Version 4.0 where they are monitoring eight camera locations – 2 Primary Crusher Feeds, Primary Crusher Product, Secondary Crusher Feed, 3 Apron Feeders and SAG Mill Feed.



News

- Split Engineering awarded SBIR Phase I from the National Science Foundation for development of LIDAR based system for geo-infrastructure monitoring and management.



Split-FX Version 2.0 Released! New features include:

- Change detection using an Iterative Closest Point (ICP) algorithm, allowing rock fall and displacements to be detected from scans taken at different times.
- Photo draping, allowing 3D fracture orientations to be determined from fracture traces.
- New tools for measuring distance, area and volume in point clouds and in digital images (for block size, fracture spacing, etc.) and a Cross section tool for point clouds and meshes. New stereo net tools, including contour plots.
- Tracing fractures on 3D point clouds.

Split Engineering website updated with new look!
Go to www.spliteng.com to check it out.

Split Engineering Directory



www.spliteng.com

Split Engineering LLC
110 S. Church Ave, Suite #8312
Tucson, AZ 85701
USA
Phone: 520-327-3773
Fax: 520-326-7532
Email: info@spliteng.com
or sales@spliteng.com

Split Engineering Chile Limitada
Calle General Salvo #331, Oficina 201
Providencia, Santiago
Chile
Fono: 56-2-5978200
Fax: 56-2-5978206
Email: info@spliteng.com o ventas@spliteng.com

UNITED STATES CONTACTS

Tom BoBo - Director of Technical Sales & Marketing
Shaun Gregory - Field Engineer
Jeff Handy - Director of Development
John Kemeny, Ph.D. - Director of Research
Don Kraemer - Project Manager
Janice Meyer - Office Manager
Brian Norton - General Manager

LATIN AMERICA CONTACTS

Cristián Rodriguez Silva - Manager
Camila Arriagada B. - Accountant
Fernando Castro V.—Metallurgical Engineer
Luis Delgado Huanchicay - Field Engineer
Fernando Fernandez R.—Metallurgical Engineer
Rodrigo Fuentealba Tolosa - Mining Engineer
Gisleine Retamal Pavez - Executive Assistant
Cesar Salinas P. - Graduate Student