

# SPLIT ENGINEERING

Digital Image Analysis Systems • Software • Service

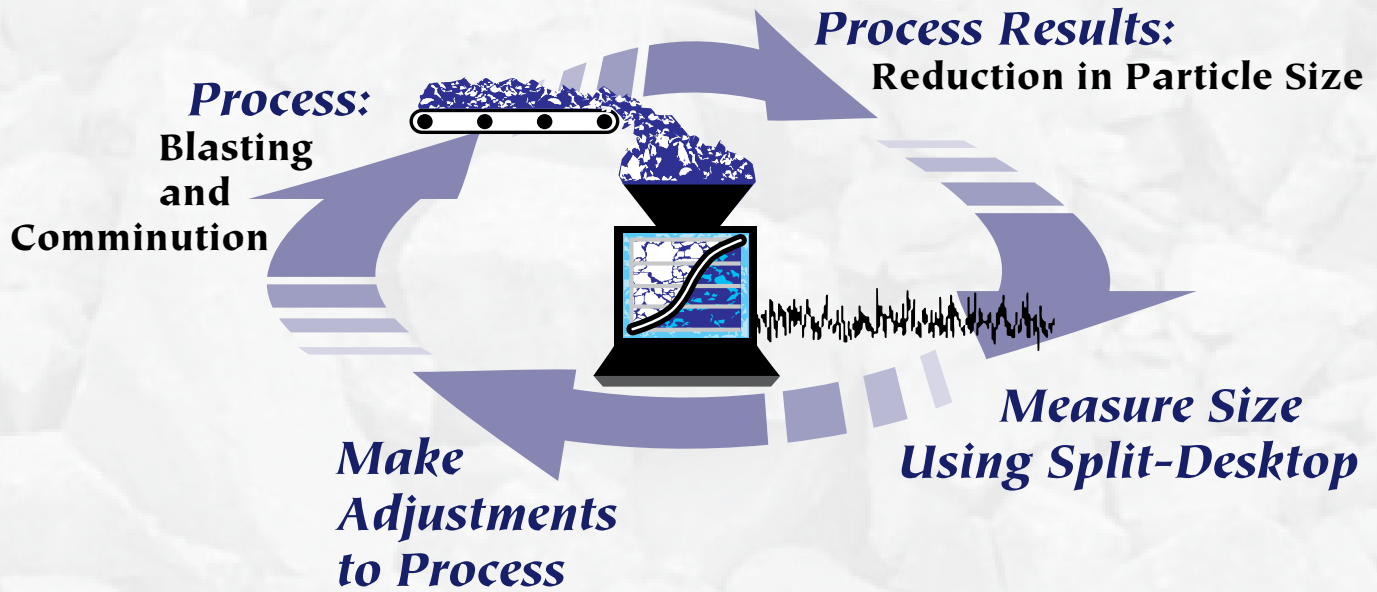
## SPLIT DESKTOP

### Fragmentation Analysis Software

#### About Split Engineering

Split Engineering is a truly customer-oriented company dedicated to providing quantified particle size, shape, and color information of the highest integrity to enable process management and control.

# Take Control of Your Process



## Why Split Desktop®? Applications

Technical decisions, blasting costs, operational efficiency and productivity, and equipment performance can all be related to optimum rock fragmentation. In the past, the lack of an easy, non-disruptive, economical measuring technique has meant that, in most cases, rock fragmentation has not been defined in quantitative terms. Now, Split-Desktop provides an economical alternative to manual sampling and screening and an objective measure rather than subjective qualitative estimates. Image samples can be acquired and processed in minutes, for quick and easy data analysis.

Use Split-Desktop in a variety of applications to generate valuable operational information.

### Process images

- ▶ Muck piles
- ▶ Leach piles
- ▶ Truck dumps
- ▶ Drawpoints
- ▶ Riprap sizing
- ▶ Conveyors

### Actual Customer Applications and Consulting Projects Using Split-Desktop

- ▶ Create Database of Geologic Zone Specific Post-Blast Fragmentation Information.
- ▶ Stock Pile, Leach Pile and Waste Dump Size Measurement and Monitoring.
- ▶ Underground Drawpoint Monitoring.
- ▶ Primary Crusher Testing to determine relation of throughput to feed and product size.

## Benefits

### Facilitates Process Control

- ▶ Enables measurement of particle fragmentation.
- ▶ Empowers mining personnel with crucial operational information at numerous points within the comminution process.

### Economical Data Acquisition

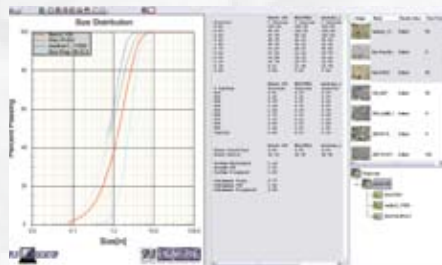
- ▶ Objective, rapid and less labor intensive than manual methods.

### Ease of Use

- ▶ Familiar graphical interface Windows environment.

## Mission Statement

Split Engineering creates customer value through facilitating optimal and efficient mine operations by custom developing and implementing the most technologically advanced techniques of image analysis. Split Engineering will maintain its reputation in the mining industry for exceeding customer expectations through exemplary customer service.



**SPLIT ENGINEERING**

Digital Image Analysis Systems • Software • Service  
[www.spliteng.com](http://www.spliteng.com)